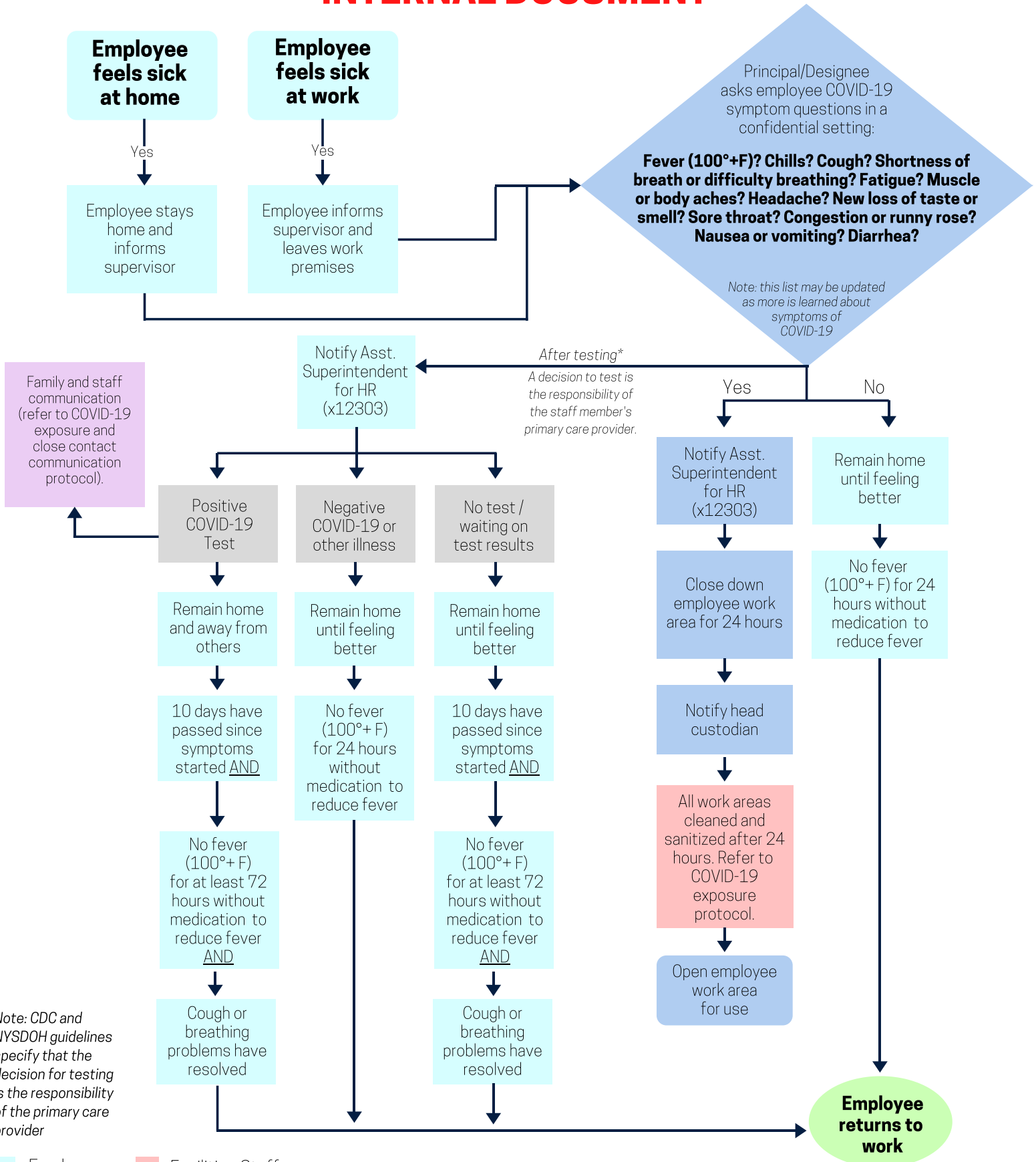


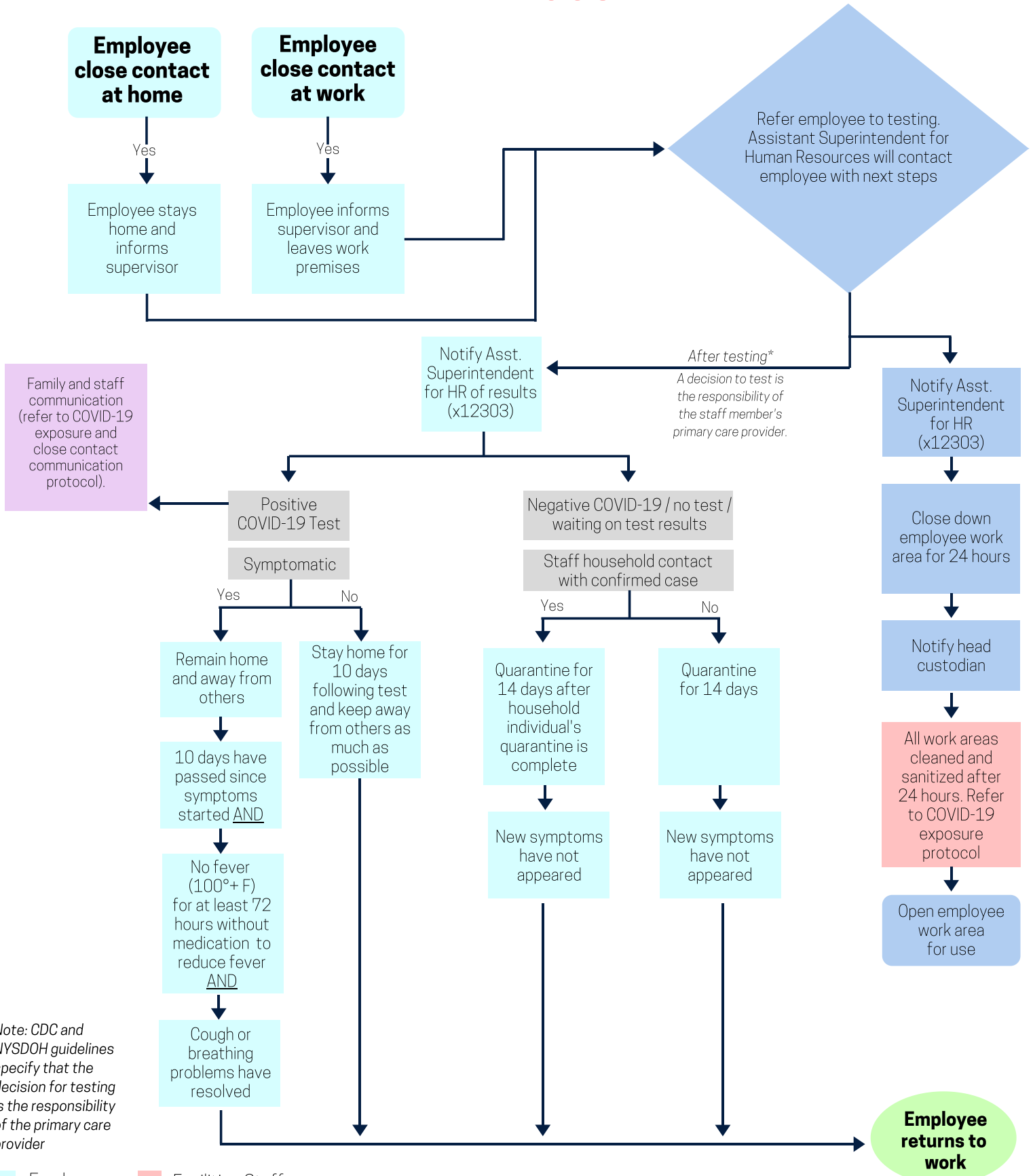
INTERNAL DOCUMENT



Note: CDC and NYSDOH guidelines specify that the decision for testing is the responsibility of the primary care provider

- Employee
- Facilities Staff
- Supervisor
- District Office

INTERNAL DOCUMENT



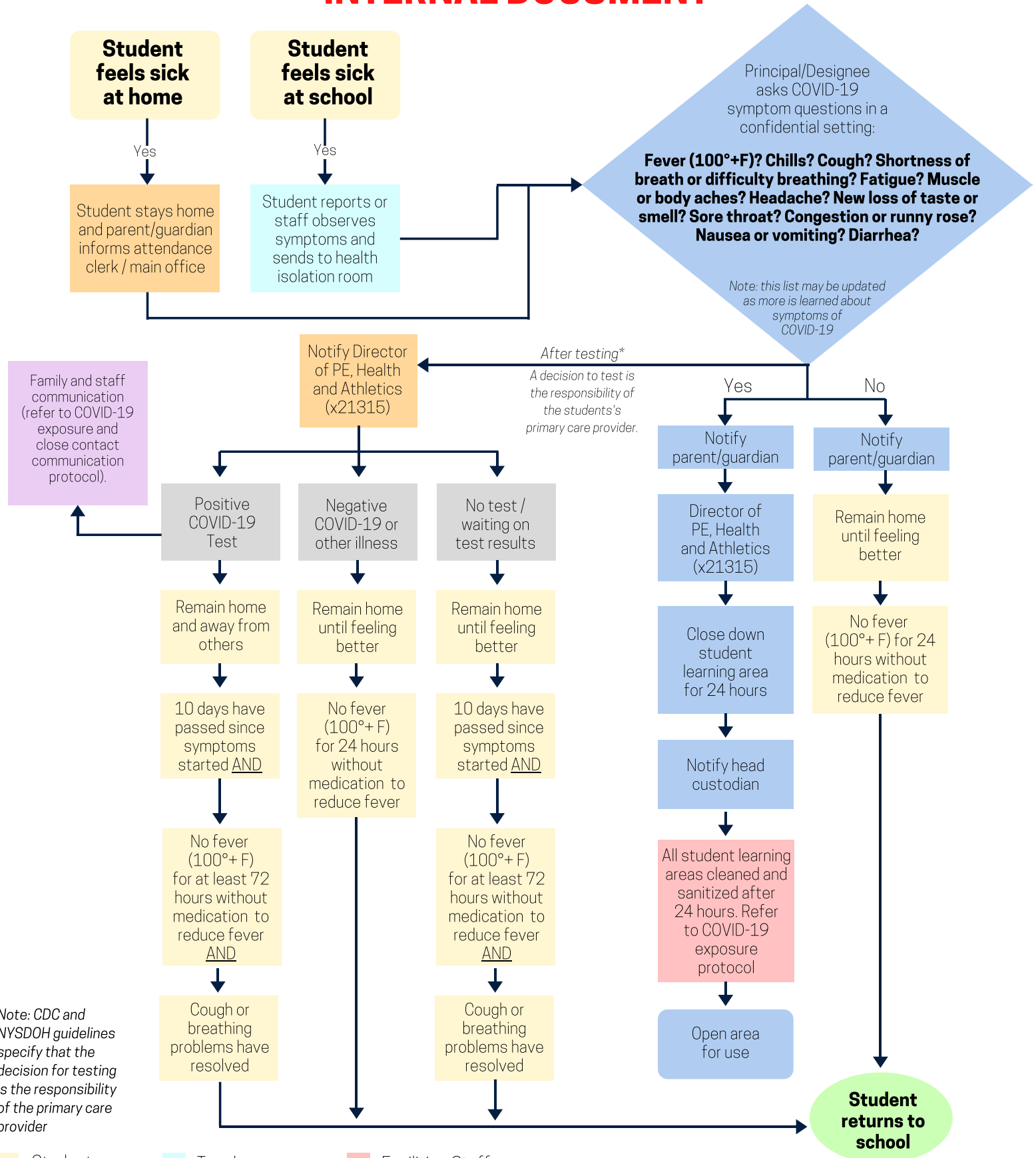
Family and staff communication (refer to COVID-19 exposure and close contact communication protocol).

*After testing**
A decision to test is the responsibility of the staff member's primary care provider.

Note: CDC and NYSDOH guidelines specify that the decision for testing is the responsibility of the primary care provider

- Employee
- Facilities Staff
- Supervisor
- District Office

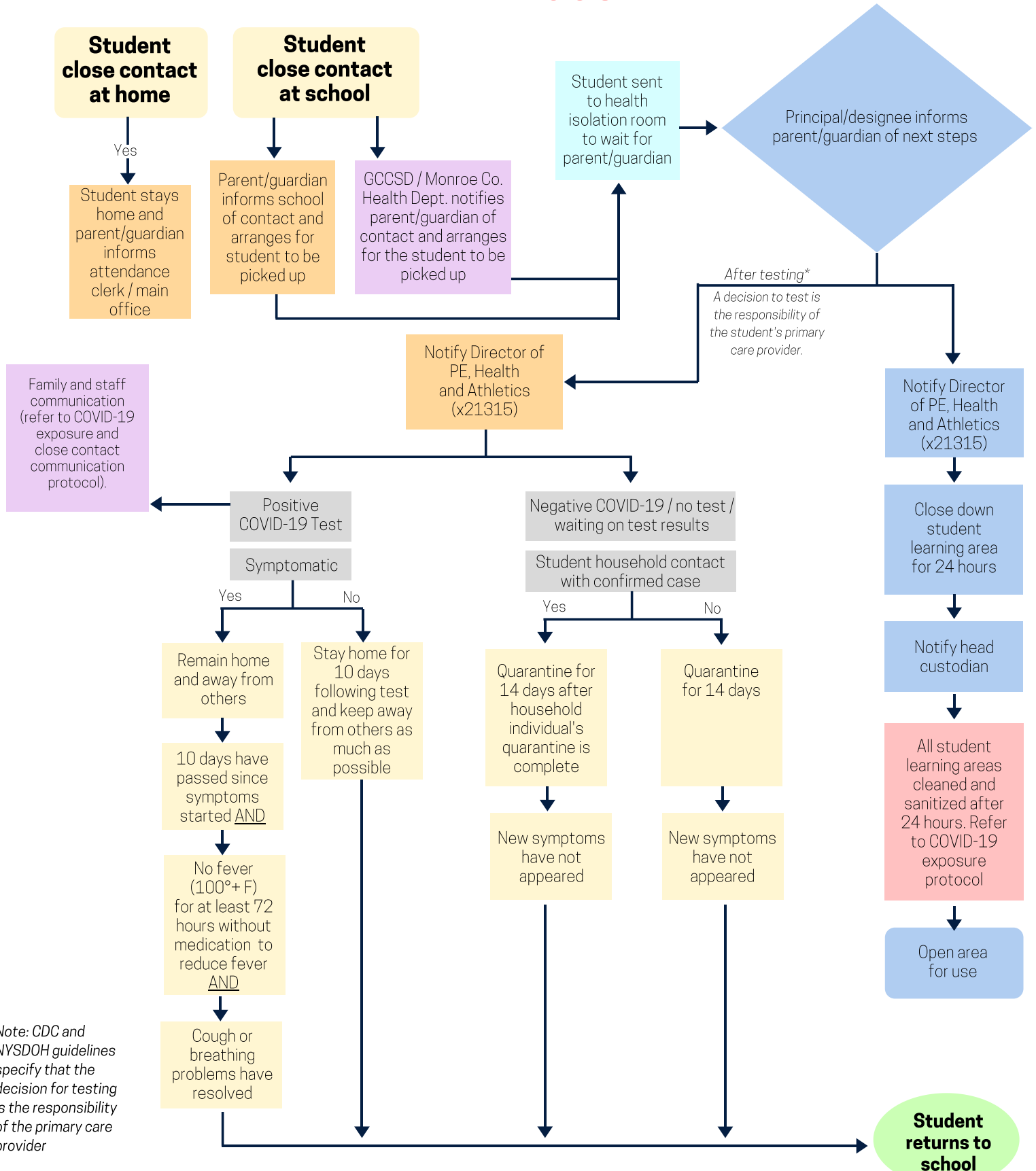
INTERNAL DOCUMENT



Note: CDC and NYSDOH guidelines specify that the decision for testing is the responsibility of the primary care provider

- Student
- Teacher
- Parent/guardian
- Principal/designee
- Facilities Staff
- District Office

INTERNAL DOCUMENT



Note: CDC and NYSDOH guidelines specify that the decision for testing is the responsibility of the primary care provider

- Student
- Teacher
- Facilities Staff
- Parent/guardian
- Principal/designee
- District Office